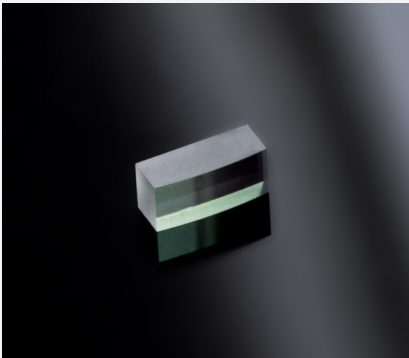


SAC - Slow Axis Collimation Lenses

SAC12 / SAC22



Features and Advantages

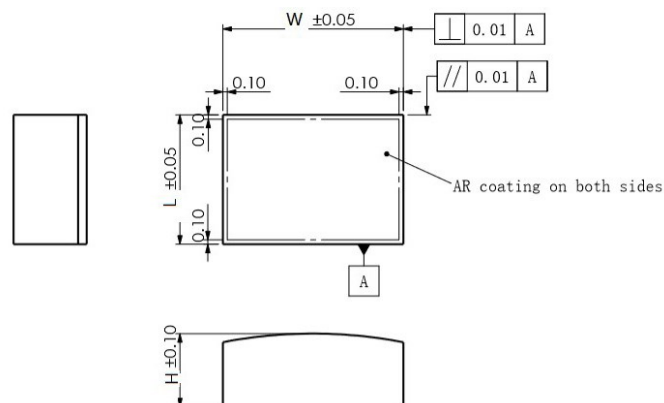
- High index, thinner & lighter upon premium collimation performance
- Wafer based technology without symmetric issues & capacity concern
- Better surface waviness and roughness performance
- Excellent optical coating durability for wide bandwidth
- Unbiased physical dimension for automatic assembly
- Aspheric design available for your request

Product Specifications

Product Code	ZLE002281	ZLE002280
Product Series	SAC12	SAC22
Specification Data	Unit	Value
Material		High Index Glass
Length (L) ⁽¹⁾	mm	2.4 ± 0.05
Width (W)	mm	4.2 ± 0.05
Thickness (T)	mm	1.7 ± 0.1
Clear Aperture	mm ²	2.1 x 3.6
Refractive Index n @ 915 nm		1.759
Effective Focal Length (EFL) @ 915 nm	mm	12.00
Back Focal Length (BFL) @ 915 nm	mm	11.03
Numerical Aperture (NA)		< 0.2
Standard Coating ⁽¹⁾ - AR 900-1000 nm Transmission	%	> 98

⁽¹⁾ Example for customization – length and coatings on request.

Product Dimensions (mm)



Rev 03 | Updated June 8, 2022