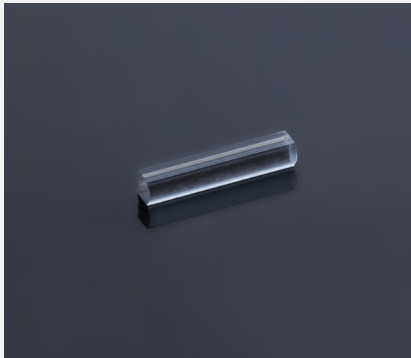


# Fast Axis Collimator

## FAC570 FS



### Features and Advantages

Acylindrical biconvex lens for the collimation of the fast axis of diode lasers. The lens is made of fused silica and optimized for high power transmission so that it withstands powers of 300 W or even higher.

### Product Specifications

Specification Data	Unit	Value
Material		Fused Silica
Width (W)	mm	1.0 ± 0.05
Thickness (T)	mm	0.96 ± 0.05
Refractive index n @ 450 nm		1.466
Effective focal length (EFL) @ 450 nm	mm	0.57
Back focal length (BFL) @ 450 nm	mm	0.17
Numerical aperture (NA)		0.58
Transmission / AOI	% / °	> 99 / 0-30
Power within an angle of ± 1.1 mrad <sup>(1)</sup>	%	> 90

Product Code	ZLE002217 <sup>(3)</sup>	ZLE002150	ZLE002284 <sup>(3)</sup>	
<b>Specification Data</b>	<b>Unit</b>	<b>Value</b>		
Length (L)	mm	14.0 ± 0.1	5.6 ± 0.1	4.0 ± 0.1
Clear aperture (Side A)	mm <sup>2</sup>	13.0 x 0.4	5.0 x 0.4	3.8 x 0.4
Clear aperture (Side B)	mm <sup>2</sup>	13.0 x 0.65	5.0 x 0.65	3.8 x 0.65
AR-Coating	nm	400 - 480	400 - 480	400 - 480
Surface imperfections (DIN ISO 10110-7)		5/5x0.025; C2x0.04; L2x0.025; E <sup>(2)</sup>	5/5x0.025; C2x0.04; L2x0.025; E <sup>(2)</sup>	5/2x0.1; C2x0.1; L2x0.025; E <sup>(2)</sup>

<sup>(1)</sup> Valid for an emitter-height of 1µm and no smile of the laser diode.

<sup>(2)</sup> Chipping on short edge 0.2, chipping on long edge 0.08.

<sup>(3)</sup> Example for customization – design, dimensions & coatings on request.

### Product Drawing (mm)

